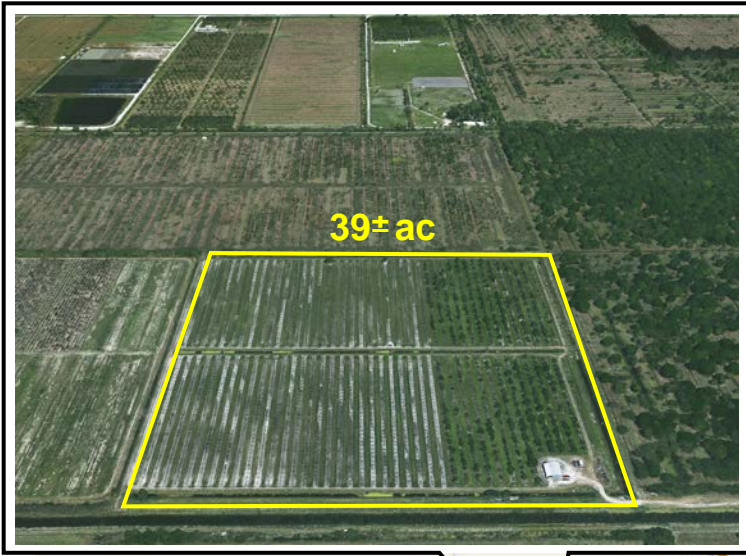




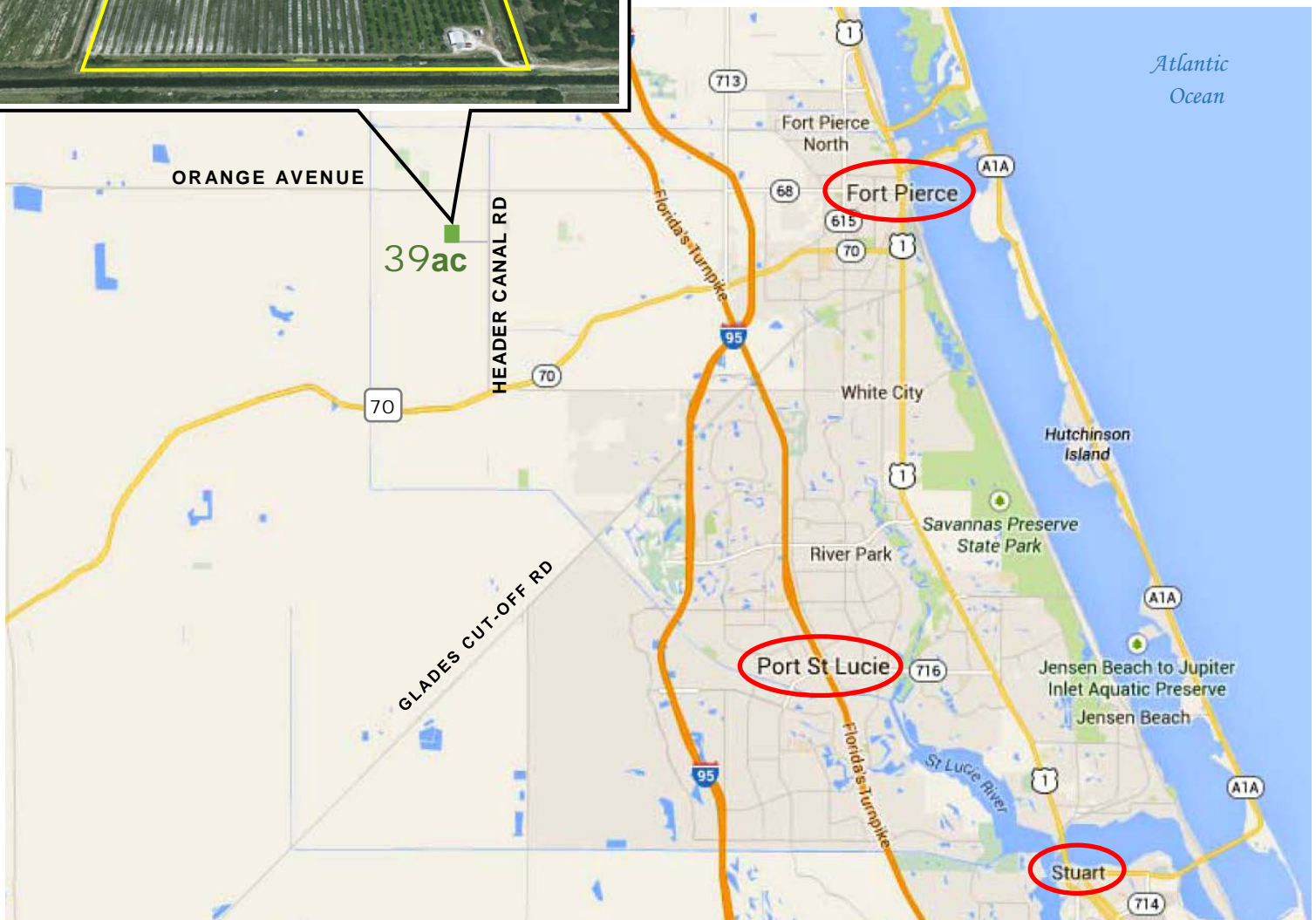
**mark walters
& company**
real estate brokers & auctioneers

39+ac Secluded Agricultural Land

Pineapple Lane, Saint Lucie County, FL



- 36'x48' Pole Barn w/ 150amp electric service & 12'x24' enclosed Shop on concrete floor
- NSLRWCD Canal #65 frontage, Fenced 3 sides
- Pineapple Lane is public road to the entrance
- Tractor & PTO-drive in/out Pump
- AG-5 Zoning; 25ac Red Grapefruit
- PID# 2215-141-0001-000-7, MLS# RX-10402930



Agricultural Business Site or Peaceful, Private Location for Country Home

From I-95: Take Exit #131 at Orange Ave / SR68, go West 6.25 mi to Header Canal Rd, then South 1mi to Pineapple Lane, then West 1mi to property & gate.

\$259,000.

www.waltersco.com • email: mark@waltersco.com
531 South US Hwy 1, Suite B • Fort Pierce, FL 34950
Office (772) 468-8306 • Cell (772) 201-5650 • Fax (772) 497-5096
FLAU1555AB1833

Property Photos

